

**Mfg. Exc. | Technology | Engineering | Sustainability**

**360+ Clients Across Globe, Fastest Growing in India**

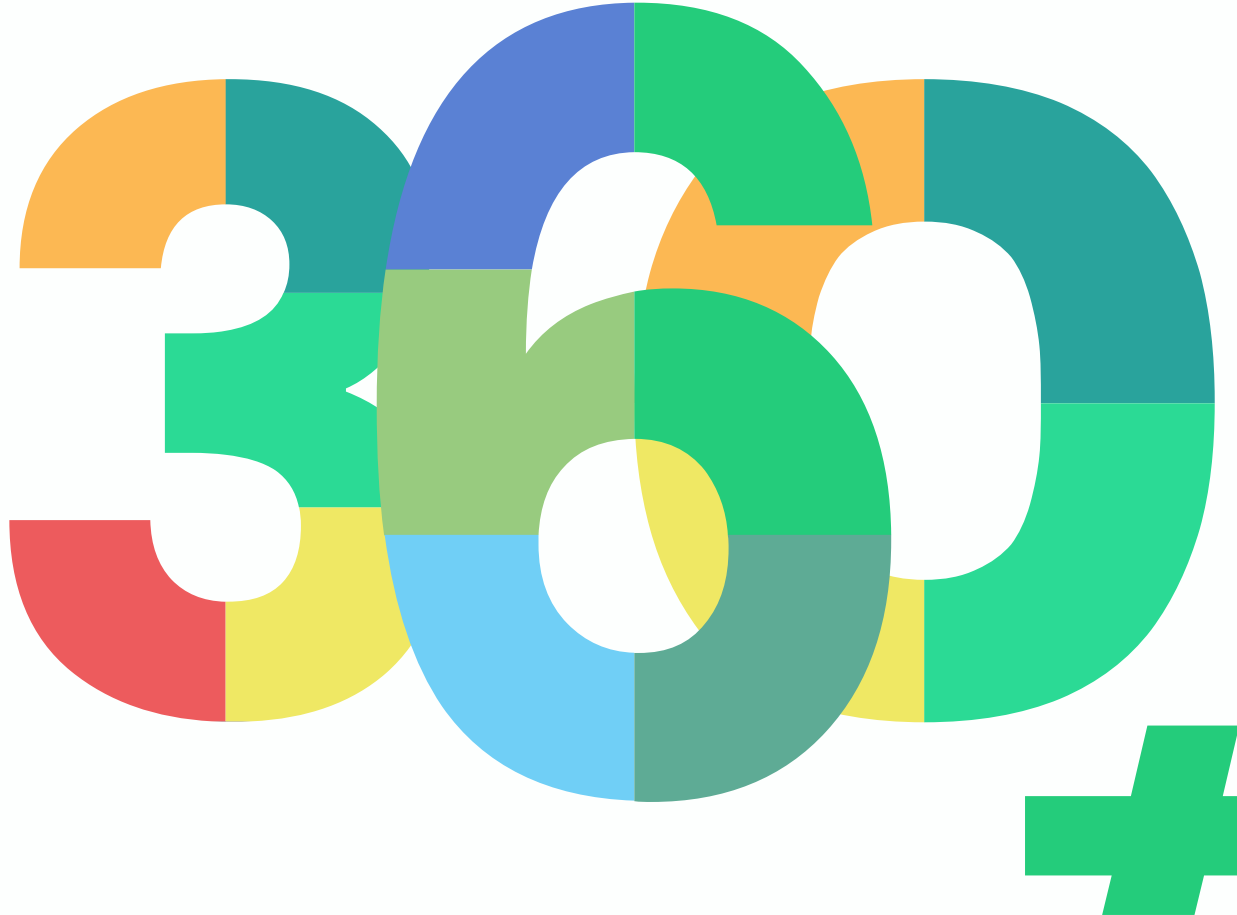
**By India for the World – (आत्म- निर्भर भारत !!!)**





# The Powerpack of Learning – **360+ Clients**

We are FOG – Foot on the Ground



# Enabling Sustainability Goals

## Board Room to “On Ground”

**BROG™**

Strategy | Engineering | Cutting Edge Tech |  
Industry 5.0 Readiness | Nature-Based Solution



# The Flywheel Momentum – Spinning the Buzz

The Catalyst:

## Let Strategy “Walk the Talk”

This requires transforming strategic plans into actionable steps, ensuring that our approaches are pragmatically executed, measured, and drive quantifiable success, aligning with core objectives.

### Board Strategy

Crafting global-oriented strategies to meet international standards and market needs..

### Localized Strategy

Tailoring strategies to leverage local industry strengths & competitive advantages.

### Engineering & Machines / Operations

Optimizing engineering processes for enhanced machine efficiency and operational excellence.

### Cutting Tech Solution

Implementing advanced technology for precision and innovative solutions.

### Implementation & Performance Tracking

Executing strategies and monitoring performance for continuous improvement..

### Applying Nature Based Solutions

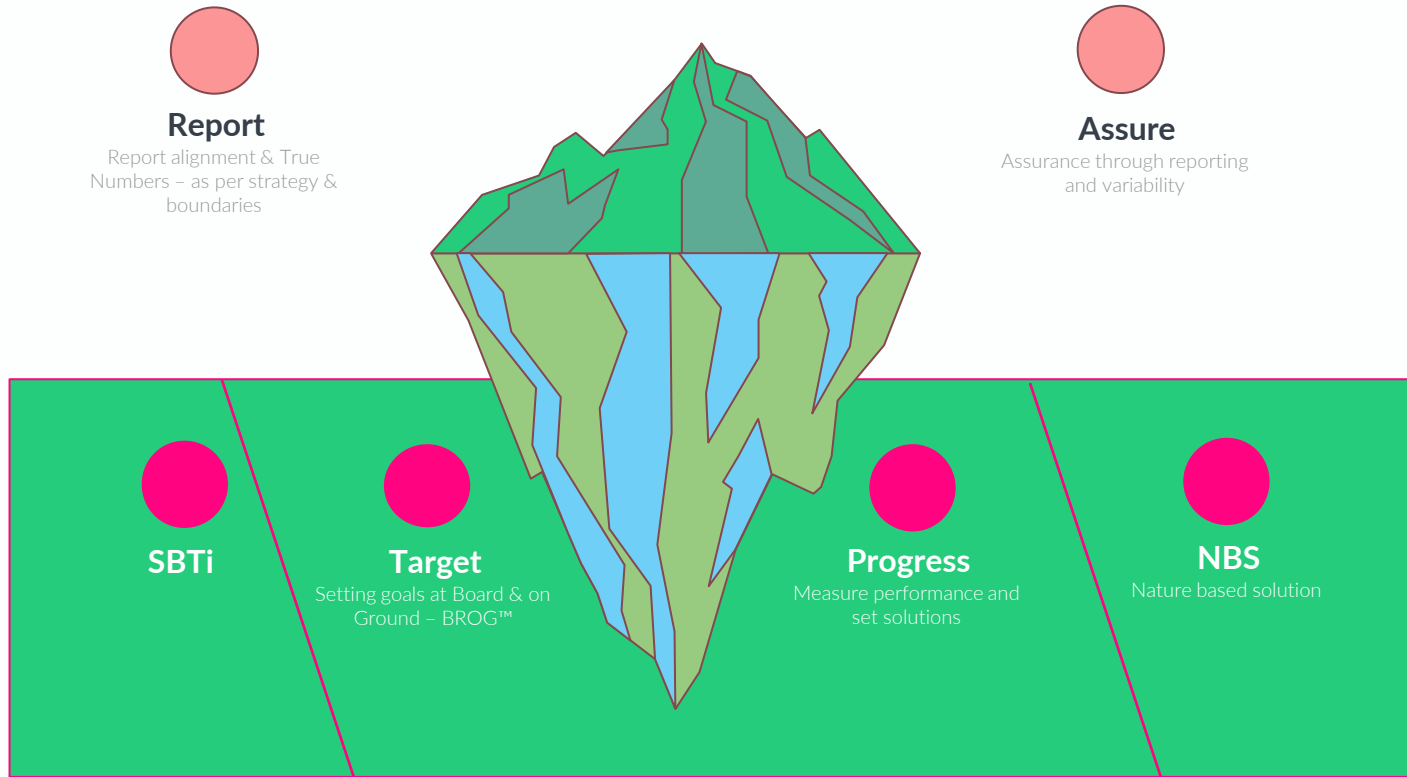
Adopting nature-based approaches to address and mitigate emissions





# Strategy to Reality – Introducing – RATP™

We are FOG – Foot on the Ground

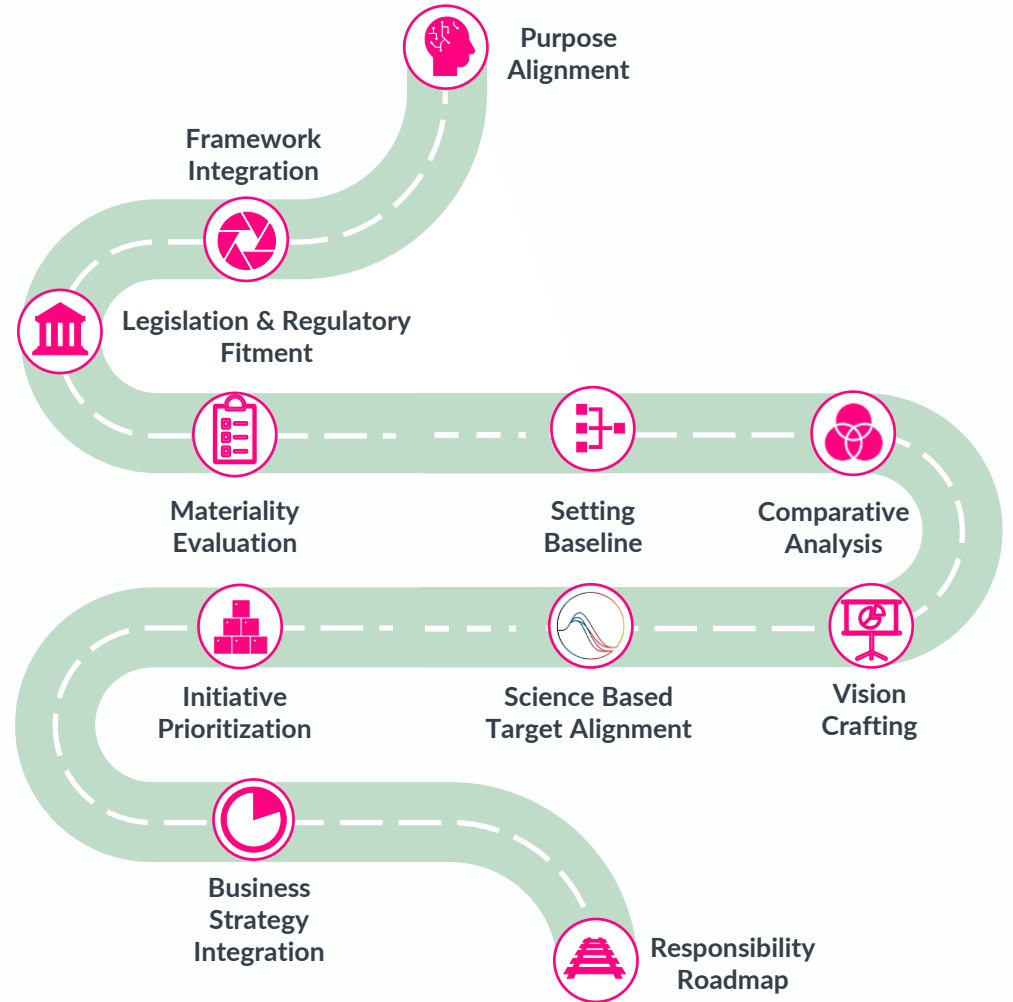




Phase 1	Phase 2	Phase 3
---------	---------	---------

# Sustainability Roadmap-

## Phase 1 Strategy





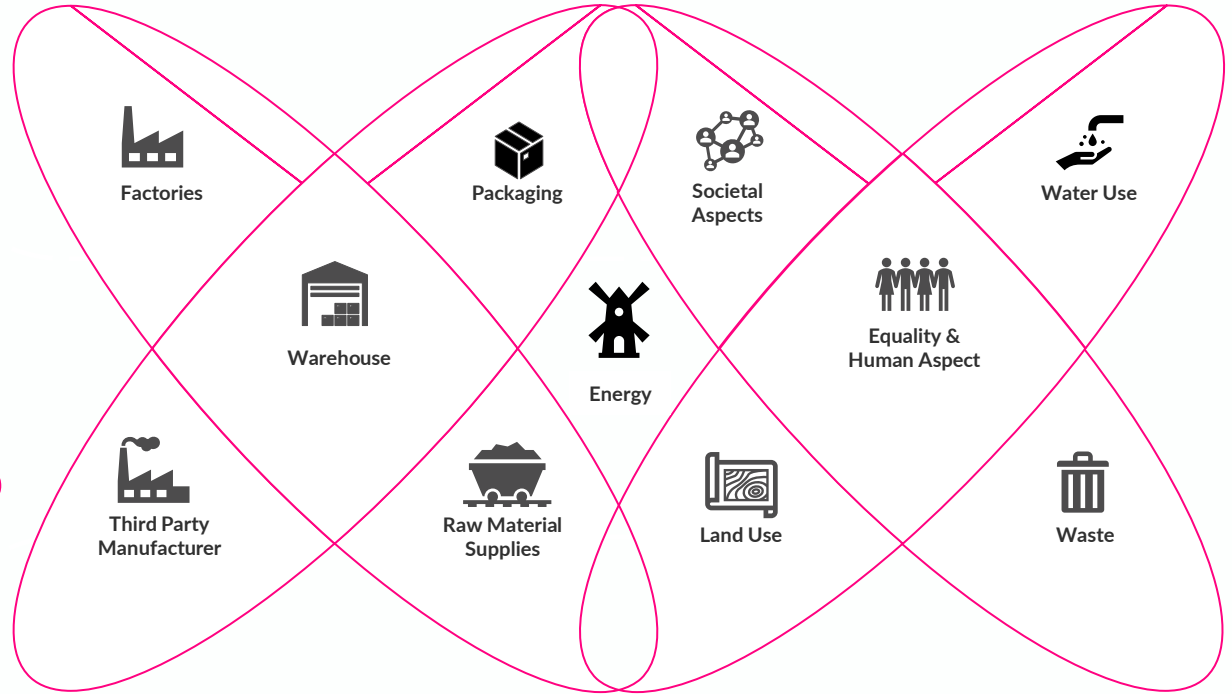
Phase 1	Phase 2	Phase 3
---------	---------	---------

# Sustainability Roadmap-

## Phase 1.1

### Alignment

To set micro goals to Stakeholders

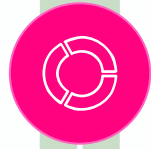




Phase 1

Phase 2

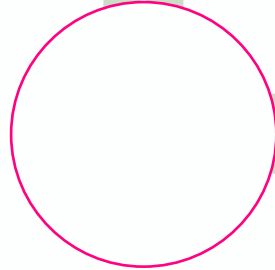
Phase 3



Policy Establishment



Governance Structure Setup



Training Sessions



Roadmap Implementation Oversight



Risk Management Protocols

# Sustainability Roadmap- Phase 2 Execution

Details ahead...





# Sustainability Roadmap–

## Phase 3

### Reporting & Solutions



Technology &  
Analytics



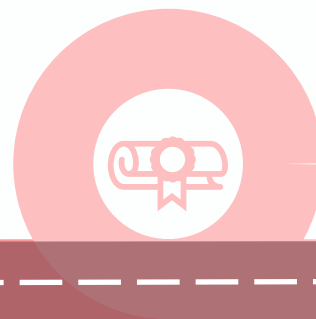
Stakeholder  
Engagement  
Blueprint



Reporting &  
Validation



Ratings  
Assessment



Accreditation &  
Endorsement



# GHG Emission

## Scope 1

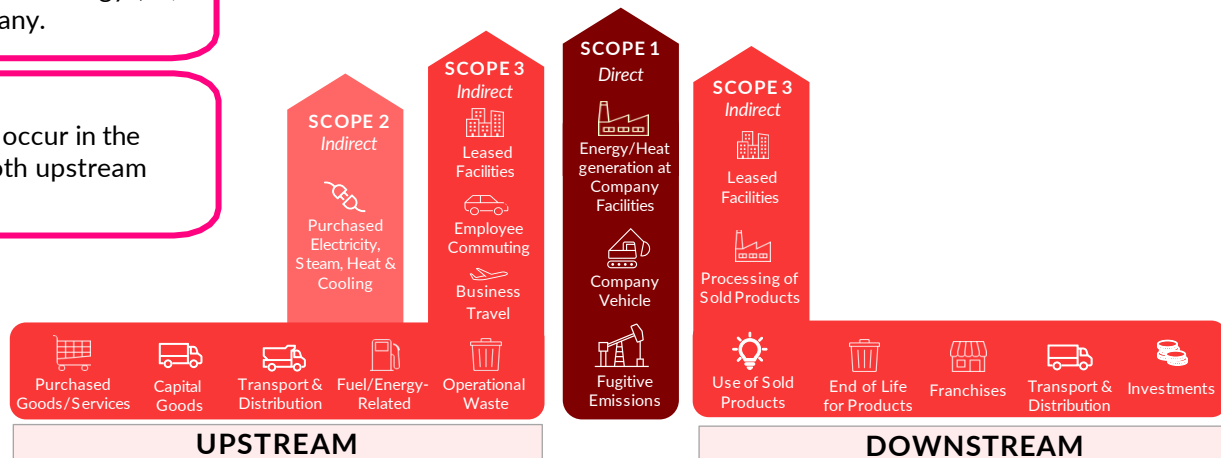
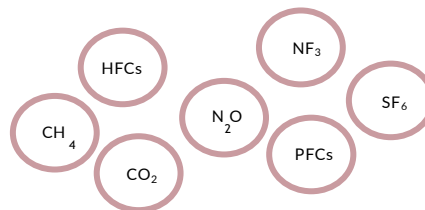
Direct GHG emissions occur from sources that are owned or controlled by the reporting company.

## Scope 2

Indirect emissions from the generation of purchased energy (i.e., electricity, steam) consumed by the reporting company.

## Scope 3

All indirect emissions (not included in scope 2) that occur in the value chain of the reporting company, including both upstream and downstream emissions.



# Scope 1 & 2 Action Plan

## A Roadmap for Sustainable Transformation

### Kick off

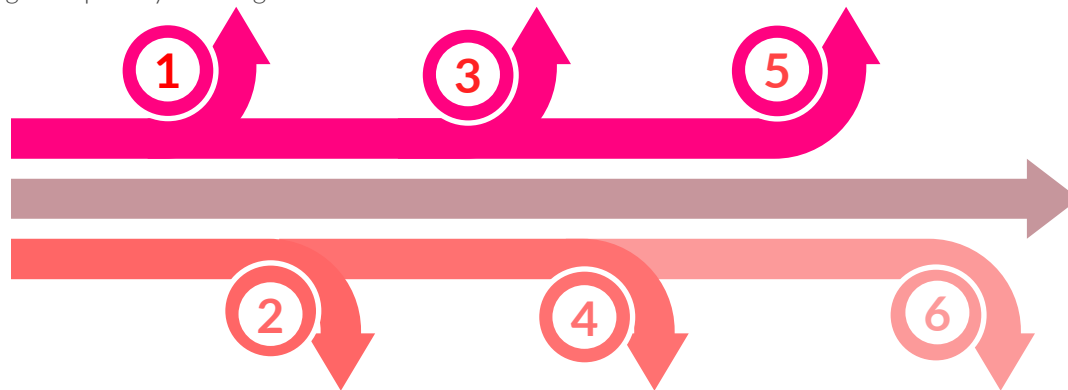
- Overview of value chain
- Setting organizational Boundaries
- Alignment on ESG Framework
- Training & Capability Building

### Verification & Assurance Service

- Self Assured
- Third Party

### Target Implementation

- Cutting Edge
- Engineering Solution
- Nature Solution



### Data Collection

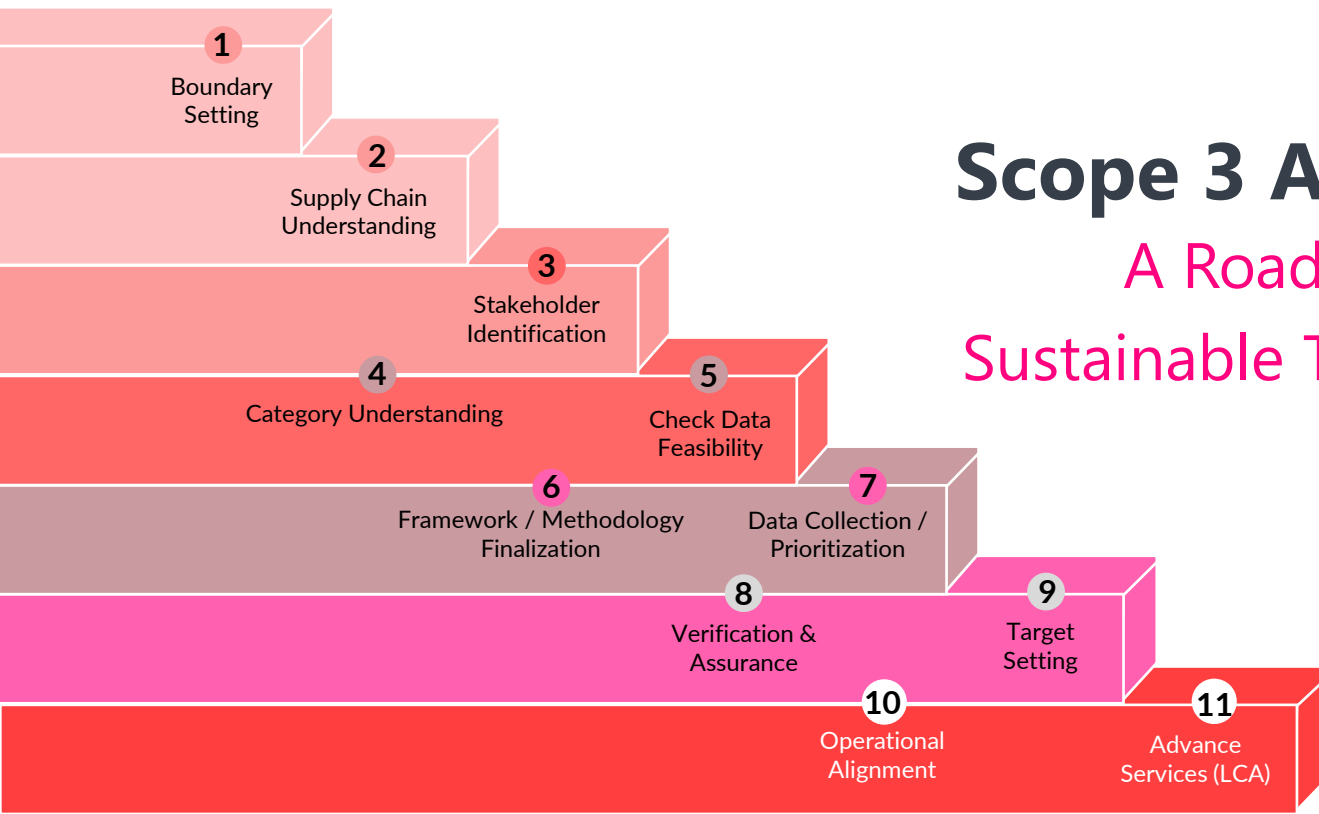
- Handholding in collection of data
- Data Collection - Software

### Target Setting

- Develop targets & standards
- Validate targets
- Communicate relevant stakeholders

### Advance Services

- Sustainable Climate Planning Solution
- Corporate Sustainability Solution
- Comprehensive Value Chain Solution



# Scope 3 Action Plan

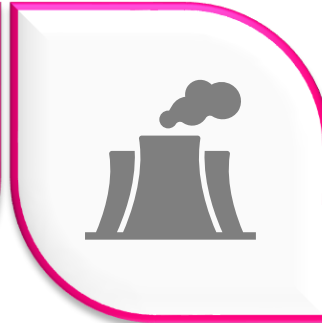
## A Roadmap for Sustainable Transformation

# Sustainable Climate Planning Solutions



## Emission Management and Reduction

GHG Accounting/Carbon Foot printing  
GHG Scope 3 Emission Inventory  
Decarbonization Road Map  
Climate Strategy and Target Setting  
Technical Support for SBTi & Target Validation.



## Risk and Resilience Planning

Climate Risk Assessment with Scenario Mapping

## Resource Sustainability

Water Neutrality  
Circular Economy



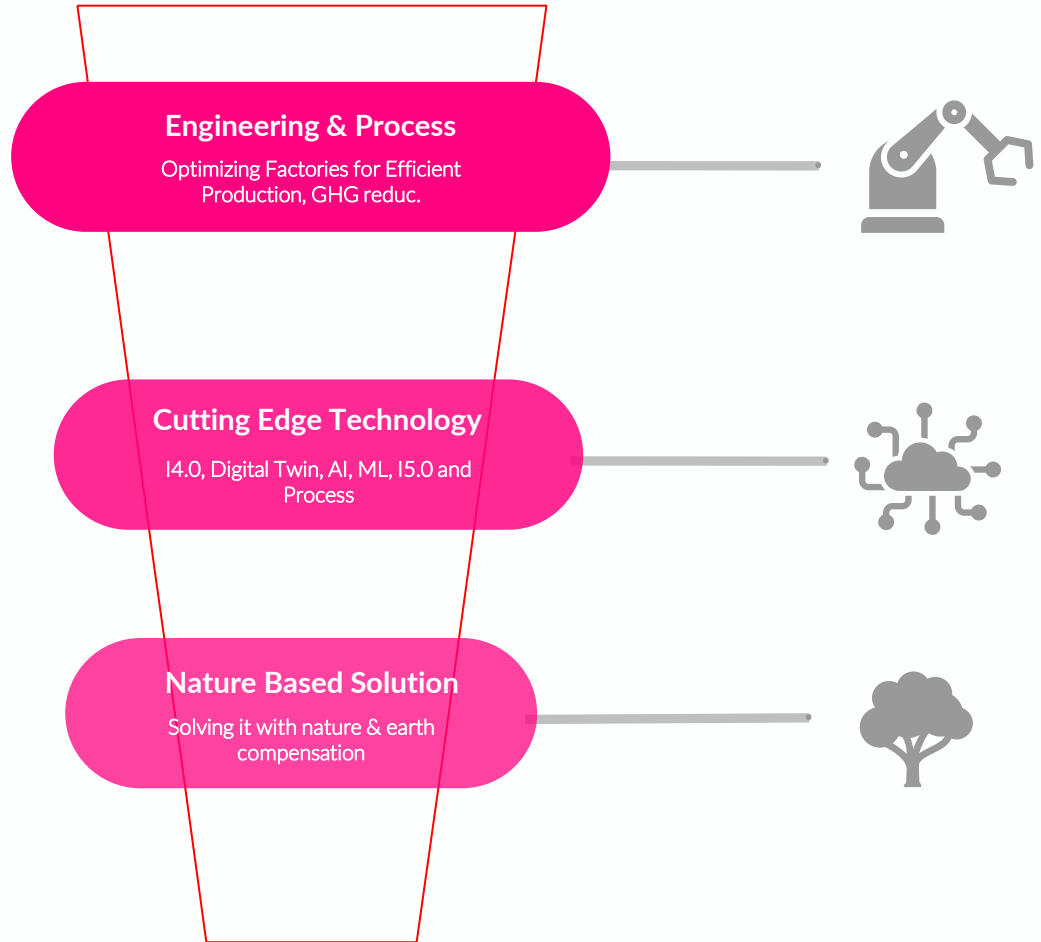
## Climate Data and Reporting Standards

Support for CDP & TCFD Disclosure  
ISO 14064 Implementation



# Time for On Ground Implementation

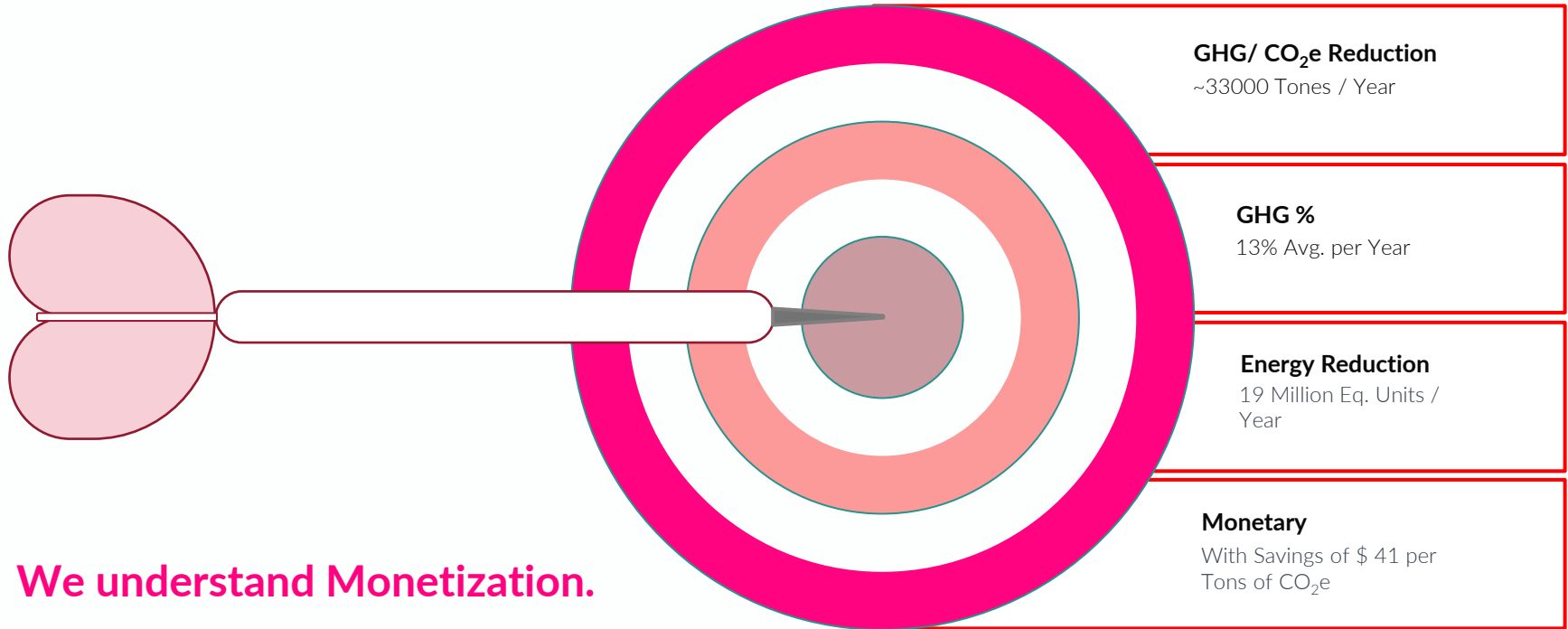
We Deliver.





# The Impact

Our 12 years and we are strategizing, implementing and showing results.



**We understand Monetization.**



# Engineering & Process

In House Manufacturing Excellence Team



## Material Efficiency

Reducing the amount of materials used in a process.



## Process Optimization

OEE, CBM, MES, Process Design, Sourcing



## Energy Optimization

Energy optimization & BucketTheory™



## Water Efficiency

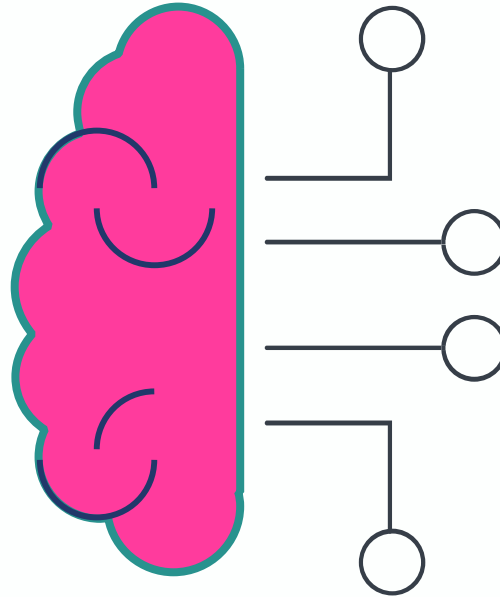
Water Balance & Innovation





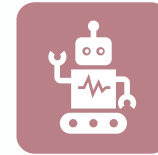
# Cutting Edge Technology

Inhouse Tech Team - Innovation Labs -  
IndustryOS™



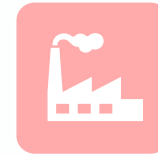
## Digital Twin

Sparrow's own iLOL™ based  
IndustryOS™



## AI Labs / Gen AI

Ai plugged in data &  
optimization with  
Prescriptive & Predictive  
ESG



## MES

(*Manufacturing Execution  
system*)  
Optimization of Process



## Leading Sustainability

World's first indexing with  
highest end tech - making  
sustainability as leading  
parameters

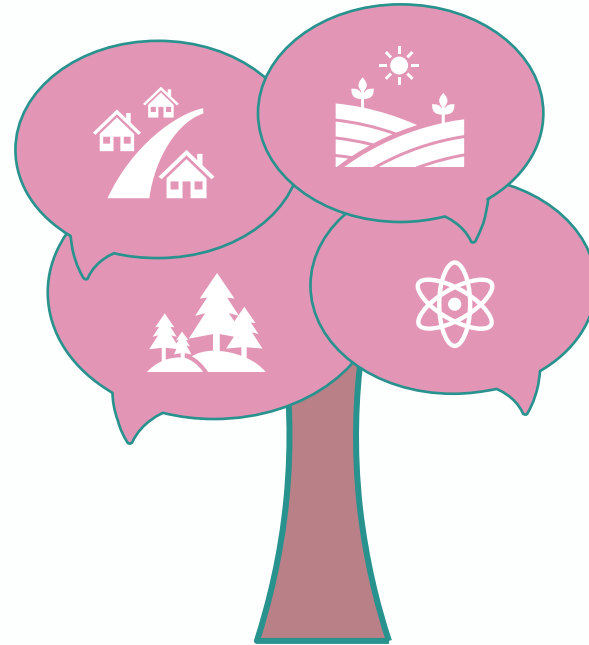


# Nature Based Solution

The last mile coverage.

**Community Led**  
Credits from community – the one who needs it most

**Forest based**  
Forestation, CSR optimization



**Farmer Led**  
Innovation farming, fertilizer, sourcing, waste, Biochar

**Science Led**  
Air Capture, Sea Feeding CO<sub>2</sub>

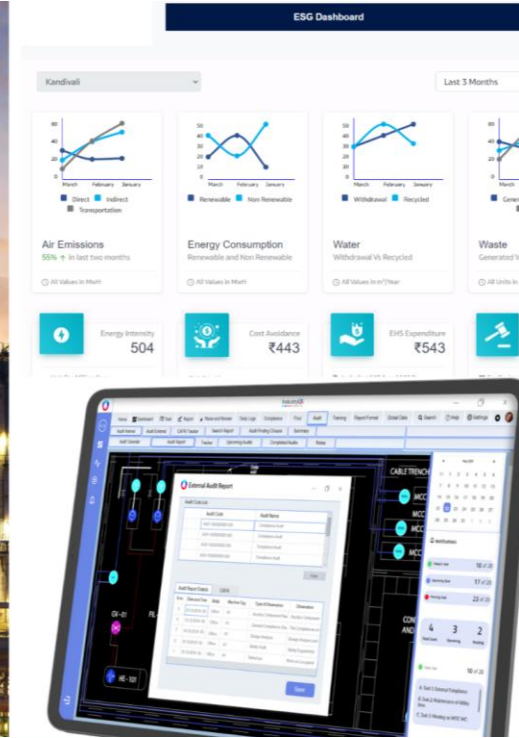


# Knowledge & Strategy: The Power Trio

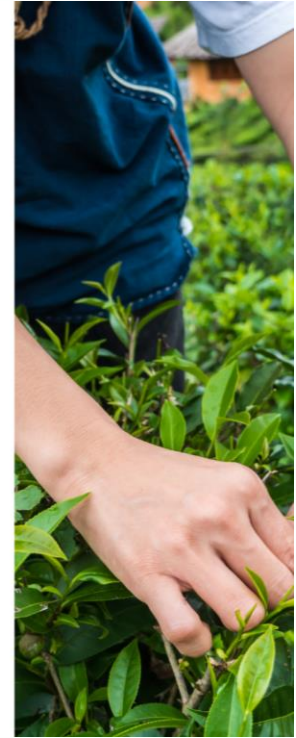
#Only 1 in India



Process



Tech



Nature-Based  
Solution



Social Impact



Ethics



Trust

# Going Beyond

Science / Mathematics / Numbers  
Seen & Unseen



# What we do?

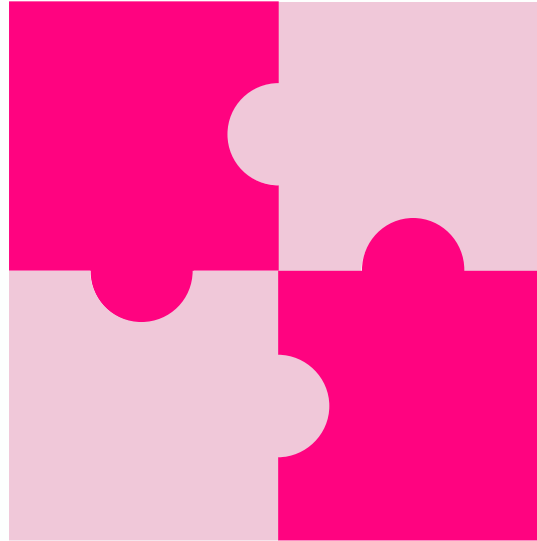
We create value by decoding the non-number puzzles.

## Anomaly Detection

On ground base lining and benchmarking,  
Expectation vs. Reality on Ground

## Update /Implement

Solve it on ground



## Root Cause

Why, intrinsic vs. extrinsic

## Track

Keep a track and improvise

# Social Impact

The coverage



## Human Rights and Dignity

- Upholding fair labor practices and combating discrimination.
- Ensuring safe and healthy working conditions across the supply chain.
- Empowering communities through responsible sourcing and investment.



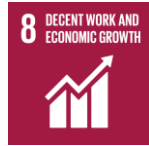
## Equality and Inclusion

- Promoting diversity and inclusion at all levels of the organization.
- Addressing gender pay gaps and ensuring equal opportunities.
- Supporting social justice initiatives and advocating for marginalized groups.



# Ethical Values

The substance



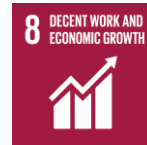
## Transparency and Accountability

- Fostering open communication and reporting on ESG performance.
- Holding leadership accountable for ethical decision-making.
- Engaging stakeholders in setting and achieving ESG goals.



## Responsible Business Practices

- Avoiding harmful business activities such as corruption and bribery.
- Building ethical supply chains and partnerships.
- Respecting intellectual property and upholding ethical marketing practices.



# Combined Impacts

The world expects from you.



## Building Trust and Reputation

- Strong ESG performance enhances brand image and consumer trust.
- Attracts and retains talent who share the company's values.
- Fosters stronger relationships with communities and stakeholders.



## Sustainable Future

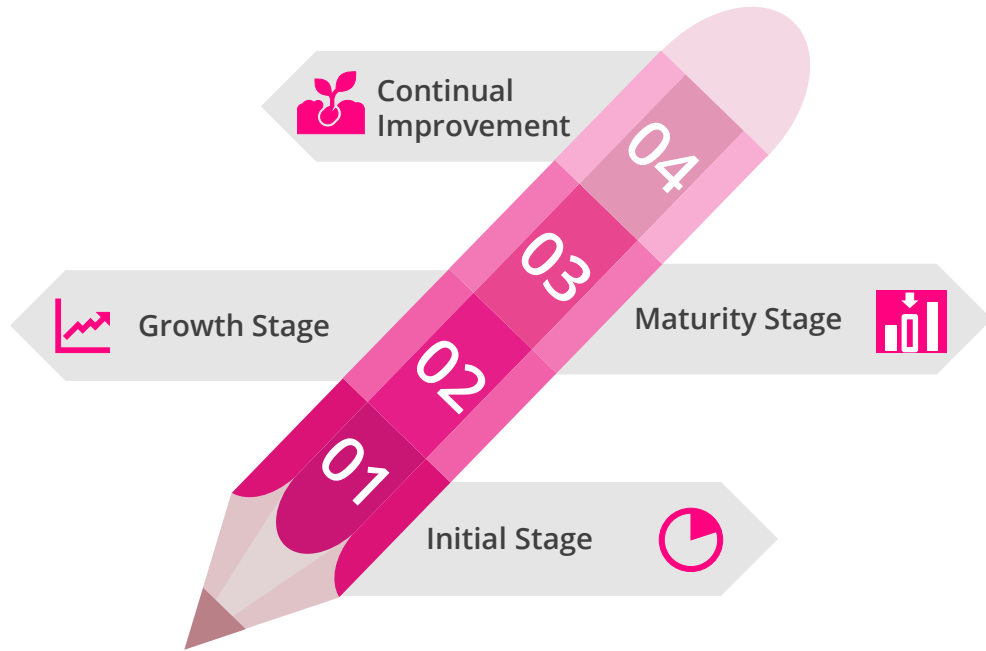
- By addressing social and ethical issues, ESG contributes to a more just and equitable world.
- Promotes long-term business resilience and profitability.
- Contributes to achieving the UN Sustainable Development Goals.





# Sustainable Journey Stage

At what stage you are?



We can help you at

**EACH**  
Stage



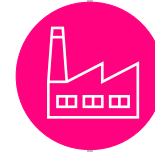
# Where we Impact?

We are Sparrow.

**Upstream**  
Sourcing, Co-Packers &  
LCA



**Your Own Sets**  
Owned/Managed  
Premises



**Downstream & Society**  
Complete Life Cycle





**Mfg. Exc. | Technology | Engineering | Sustainability**



**Caters 360+ Clients Globally**  
**India's Fastest Growing Company in the Domain**

[www.sparrowrms.in](http://www.sparrowrms.in) © Sparrow Risk Management Pvt. Ltd.