

**Mfg. Exc. | Technology | Engineering | Sustainability**

**360+ Clients Across Globe, Fastest Growing in India**

**By India for the World – (आत्म- निर्भर भारत !!!)**





# The Powerpack of Learning – **360+ Clients**

We are FOG – Foot on the Ground



# Enabling Sustainability Goals

## Board Room to “On Ground”

**BROG™**

Strategy | Engineering | Cutting Edge Tech |  
Industry 5.0 Readiness | Nature-Based Solution



# The Flywheel Momentum – Spinning the Buzz

The Catalyst:

## Let Strategy “Walk the Talk”

This requires transforming strategic plans into actionable steps, ensuring that our approaches are pragmatically executed, measured, and drive quantifiable success, aligning with core objectives.

### Board Strategy

Crafting global-oriented strategies to meet international standards and market needs..

### Localized Strategy

Tailoring strategies to leverage local industry strengths & competitive advantages.

### Engineering & Machines / Operations

Optimizing engineering processes for enhanced machine efficiency and operational excellence.

### Cutting Tech Solution

Implementing advanced technology for precision and innovative solutions.

### Implementation & Performance Tracking

Executing strategies and monitoring performance for continuous improvement..

### Applying Nature Based Solutions

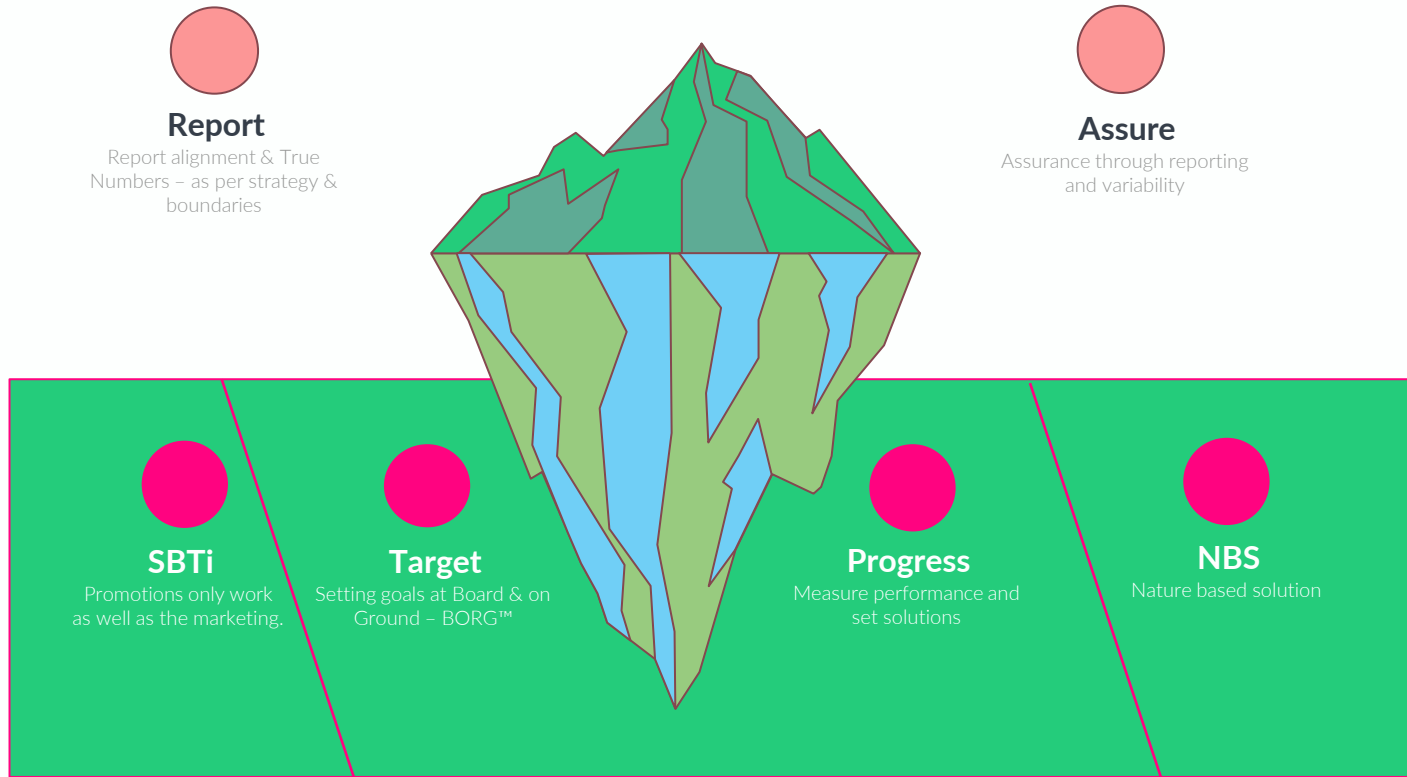
Adopting nature-based approaches to address and mitigate emissions





# Strategy to Reality – Introducing – RATP™

We are FOG – Foot on the Ground

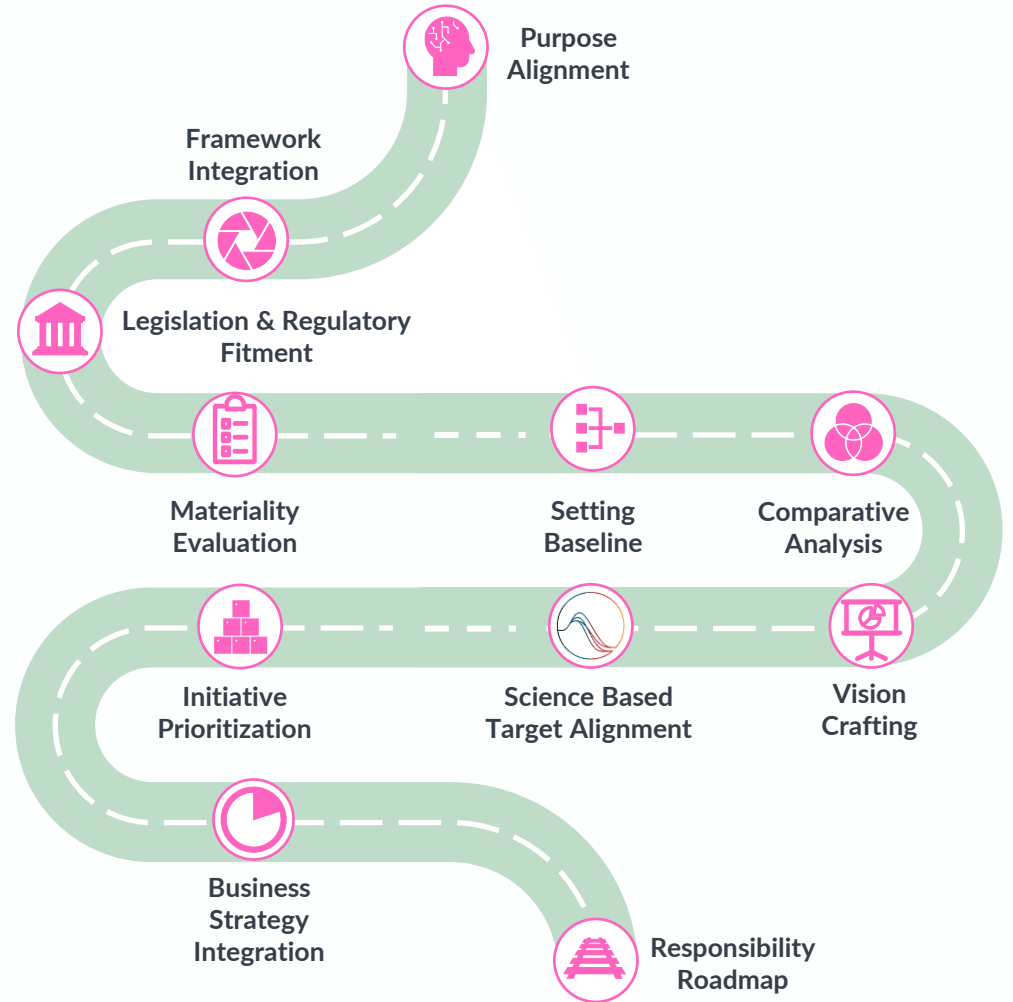




Phase 1	Phase 2	Phase 3
---------	---------	---------

# Sustainability Roadmap-

## Phase 1 Strategy





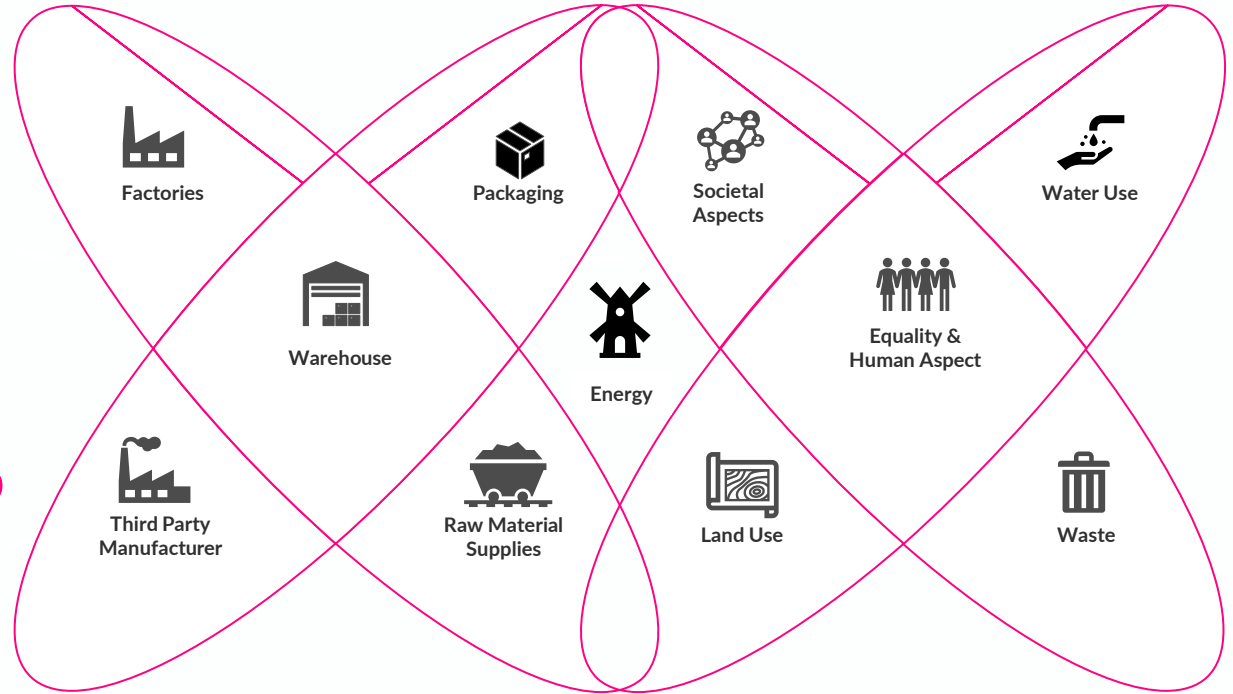
Phase 1	Phase 2	Phase 3
---------	---------	---------

# Sustainability Roadmap-

## Phase 1.1

### Alignment

To set micro goals to Stakeholders

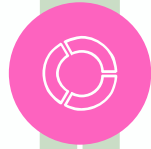




Phase 1

Phase 2

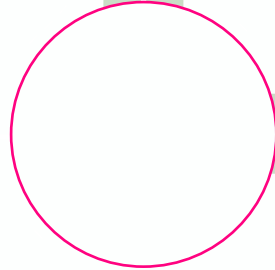
Phase 3



Policy Establishment



Governance Structure Setup



Training Sessions



Roadmap Implementation Oversight



Risk Management Protocols

# Sustainability Roadmap- Phase 2 Execution

Details ahead...





# Sustainability Roadmap–

## Phase 3

### Reporting & Solutions



Technology &  
Analytics



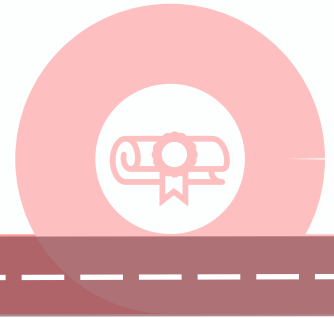
Stakeholder  
Engagement  
Blueprint



Reporting &  
Validation



Ratings  
Assessment



Accreditation &  
Endorsement



# GHG Emission

## Scope 1

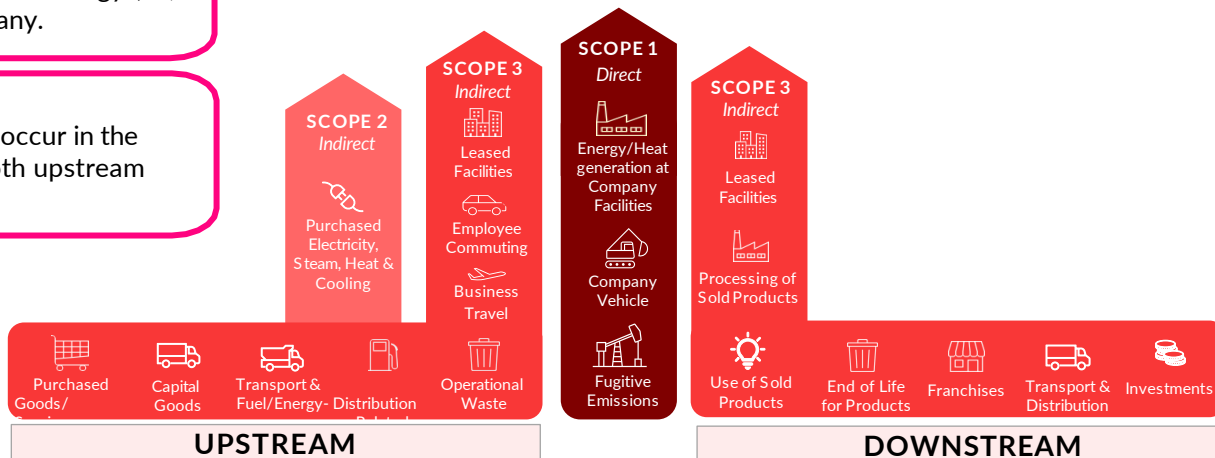
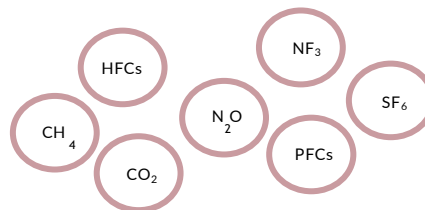
Direct GHG emissions occur from sources that are owned or controlled by the reporting company.

## Scope 2

Indirect emissions from the generation of purchased energy (i.e., electricity, steam) consumed by the reporting company.

## Scope 3

All indirect emissions (not included in scope 2) that occur in the value chain of the reporting company, including both upstream and downstream emissions.



# Scope 1 & 2 Action Plan

## A Roadmap for Sustainable Transformation

### Kick off

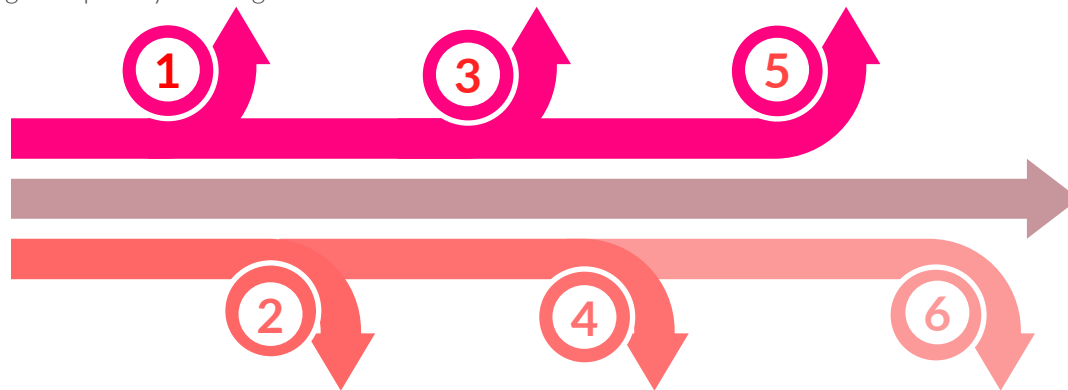
- Overview of value chain
- Setting organizational Boundaries
- Alignment on ESG Framework
- Training & Capability Building

### Verification & Assurance Service

- Self Assured
- Third Party

### Target Implementation

- Cutting Edge
- Engineering Solution
- Nature Solution



### Data Collection

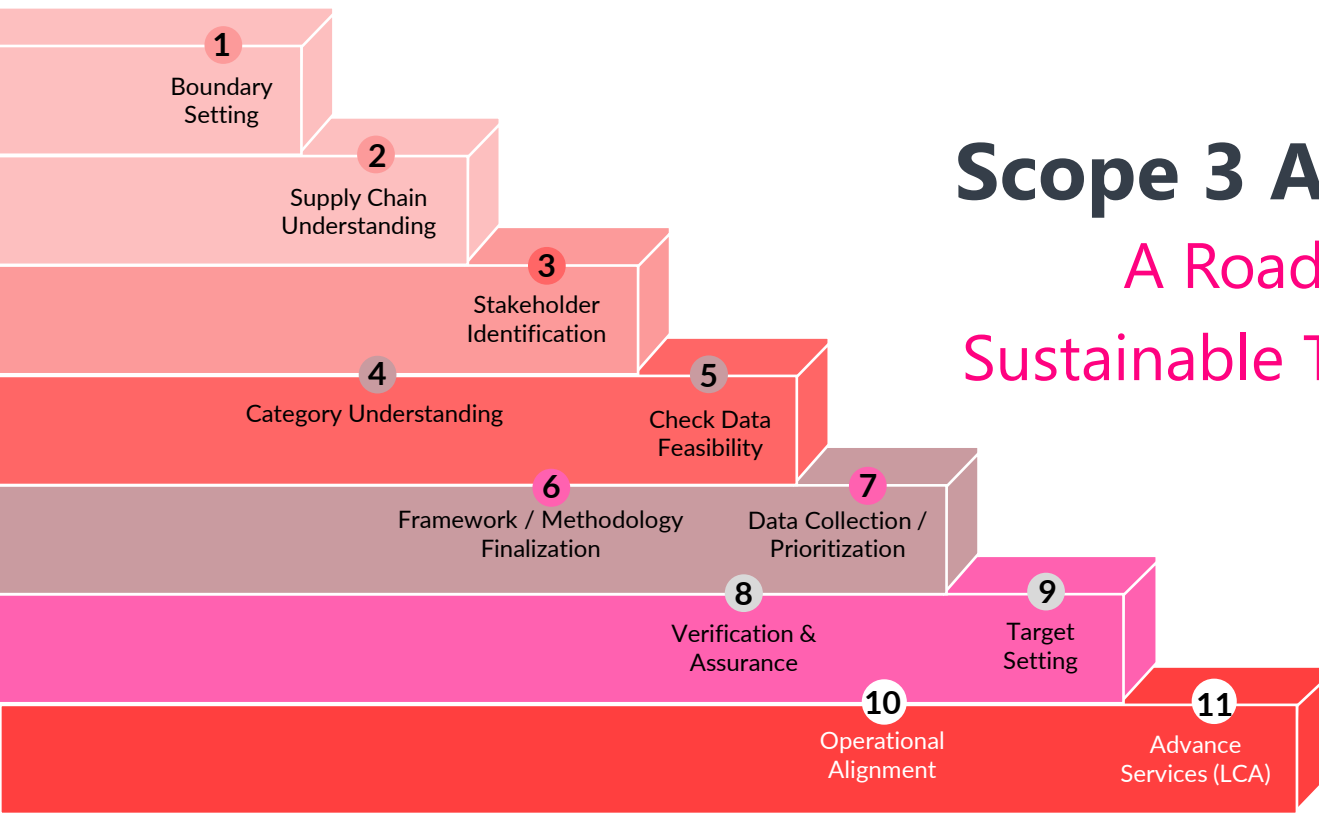
- Handholding in collection of data
- Data Collection - Software

### Target Setting

- Develop targets & standards
- Validate targets
- Communicate relevant stakeholders

### Advance Services

- Sustainable Climate Planning Solution
- Corporate Sustainability Solution
- Comprehensive Value Chain Solution



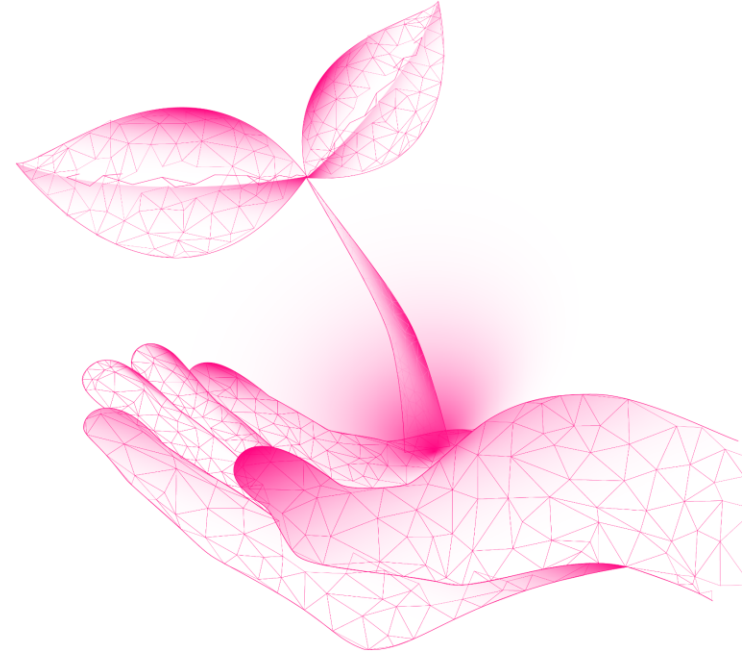
# Scope 3 Action Plan

## A Roadmap for Sustainable Transformation



## Compliance & Assessment (Integrated Assessment Services)

- ESG Compliance Assessment & Optimization
- Extended Producer Responsibility (EPR)
- BRSR Compliance Assistance
- ZWTL (Zero Waste to Landfill)
- Water Assessment & Optimization
- Waste Assessment & Optimization
- Energy Assessment & Optimization
- Circular Economy





# Sustainable Climate Planning Solutions (Climate Change Services)

### Emission Management & Reduction:

- GHG Accounting : Scope 1 & 2 Emissions
- GHG Accounting: Scope 3 Emission
- Technical support for Science-Based Target (SBTi) setting
- Net Zero Strategy
- Emission profile model for GHG (BAU, target scenarios)

### Sustainability Reporting Framework:

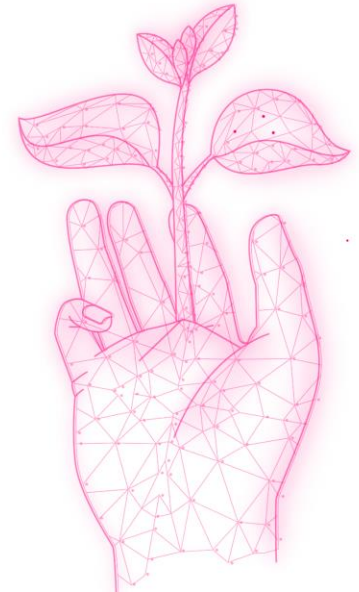
- ESG & Sustainability Reporting
- Technical Support for CDP & TCFD Disclosure
- ISO 14064 Implementation

### Risk and Resilience Planning:

- Climate Risk Assessment with Scenario Mapping  
(Qualitative & Quantitative)

### Carbon Credit Solutions:

- Carbon Credit Methodology  
& Validation
- Carbon Project Offsetting





# Corporate Sustainability Solutions (Sustainability & ESG Services)

## Decarbonisation Solutions:

- LCA study & Assessment
- Carbon Abatement Curves
- Technology Maturity Curves
- Glide Path for Sustainability Targets
- Carbon Pricing

## Resilient Future Planning:

- Materiality Assessment
- Water Conservation & Neutrality
- Sustainable Strategy Development
- **Nature Based Solutions**

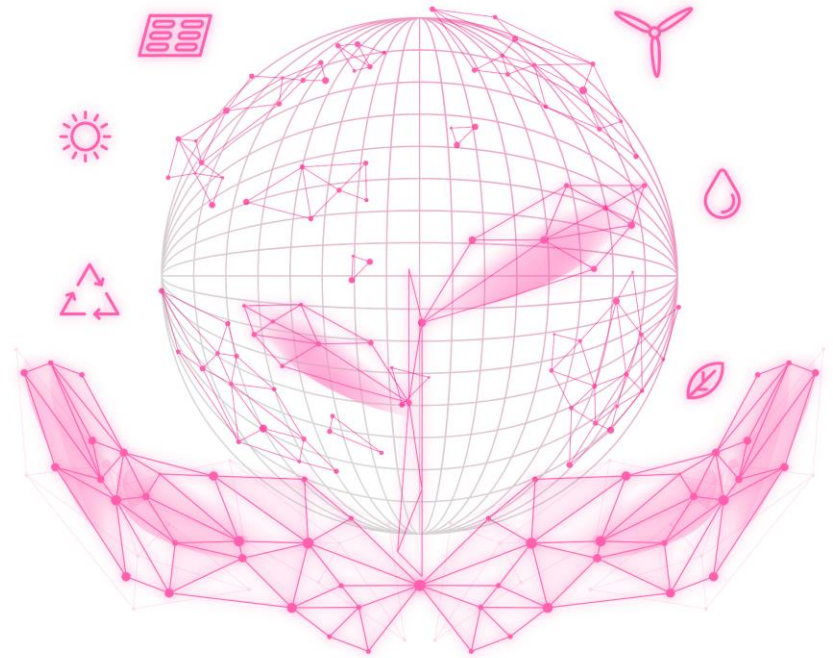




# Comprehensive Value Chain Solutions

## Sustainable Sourcing:

- Sustainable Sourcing
- Vendor Evaluation & Management
- Green Logistics





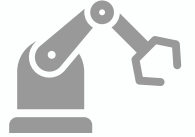


# Time for On Ground Implementation

We Deliver.

## Engineering & Process

Optimizing Factories for Efficient  
Production, GHG reduction.



## Cutting Edge Technology

I4.0, Digital Twin, AI, ML, I5.0 and  
Process



## Nature Based Solution

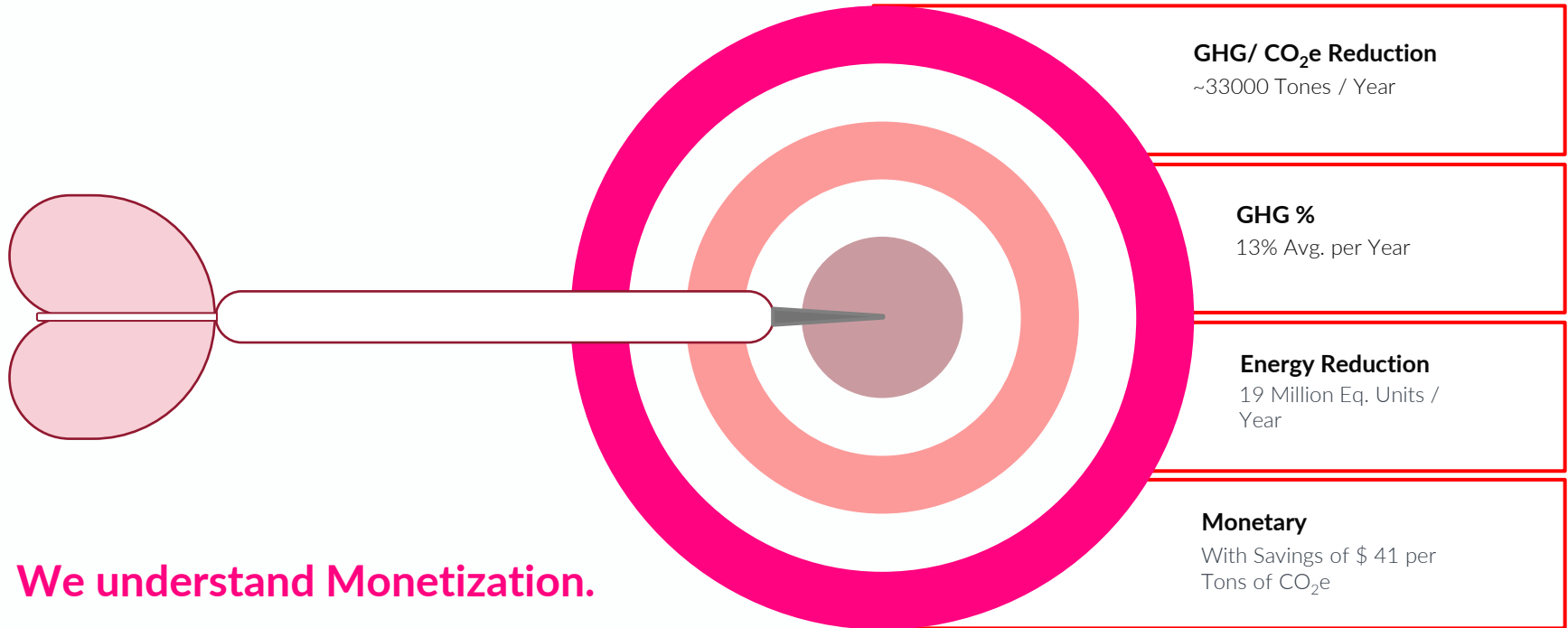
Solving it with nature & earth  
compensation





# The Impact

Our 12 years and we are strategizing, implementing and showing results.



**We understand Monetization.**



# Engineering & Process

In House Manufacturing Excellence Team



## Material Efficiency

Reducing the amount of materials used in a process.



## Process Optimization

OEE, CBM, MES, Process Design, Sourcing



## Energy Optimization

Energy optimization & BucketTheory™



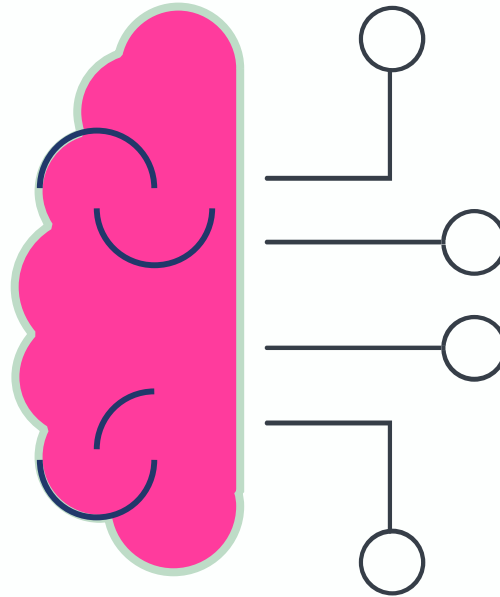
## Water Efficiency

Water Balance & Innovation



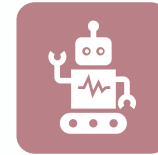
# Cutting Edge Technology

Inhouse Tech Team - Innovation Labs -  
IndustryOS™



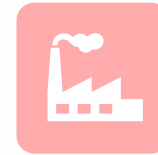
## Digital Twin

Sparrow's own iLOL™ based  
IndustryOS™



## AI Labs / Gen AI

Ai plugged in data &  
optimization with  
Prescriptive & Predictive  
ESG



## MES

(*Manufacturing Execution  
system*)  
Optimization of Process



## Leading Sustainability

World's first indexing with  
highest end tech - making  
sustainability as leading  
parameters



# Nature Based Solution

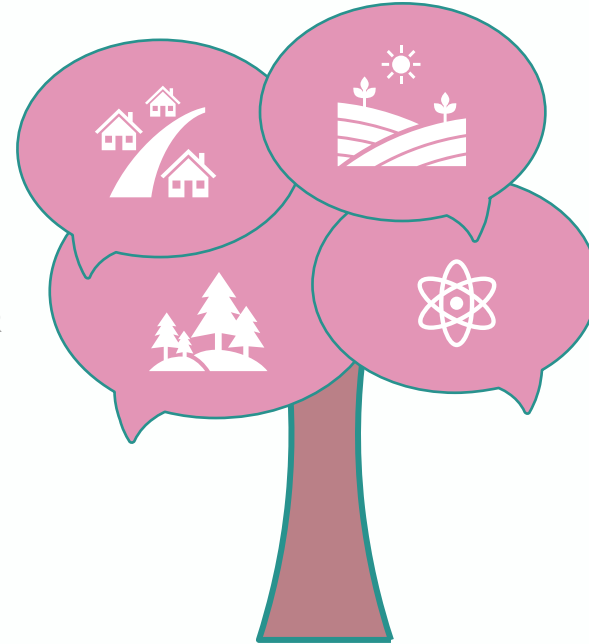
The last mile coverage.

## Community Led

Credits from community – the one who needs it most

## Forest based

Forestation, CSR optimization



## Farmer Led

Innovation farming, fertilizer, sourcing, waste, Bio-char

## Science Led

Air Capture, Sea Feeding CO<sub>2</sub>

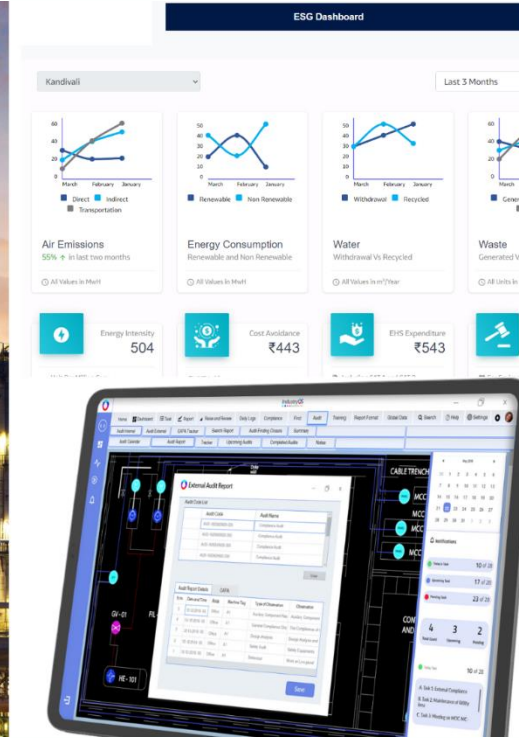


# Knowledge & Strategy: The Power Trio

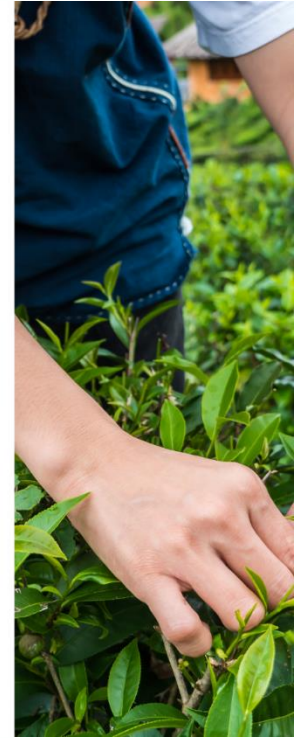
#Only 1 in India



Process



Tech



Nature-Based  
Solution

A black and white photograph of a young child, possibly a boy, looking directly at the camera with a serious expression. The image is set against a dark, textured background that looks like torn paper.

Social Impact

A golden statue of Lady Justice, the personification of the law, holding a scale of justice in her right hand and a sword in her left. The image is set against a dark, textured background that looks like torn paper.

Ethics

A close-up photograph of two hands, one larger and one smaller, clasped together in a firm grip. The image is set against a dark, textured background that looks like torn paper.

Trust

# Going Beyond

Science / Mathematics / Numbers  
Seen & Unseen



# What we do?

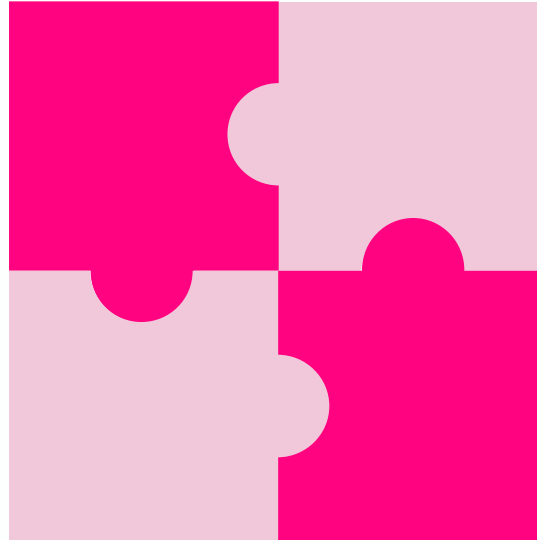
We create value by decoding the non-number puzzles.

## Anomaly Detection

On ground base lining and benchmarking,  
Expectation vs. Reality on Ground

## Update /Implement

Solve it on ground



## Root Cause

Why, intrinsic vs. extrinsic

## Track

Keep a track and improvise



# Social Impact

The coverage



## Human Rights and Dignity

- Upholding fair labor practices and combating discrimination.
- Ensuring safe and healthy working conditions across the supply chain.
- Empowering communities through responsible sourcing and investment.



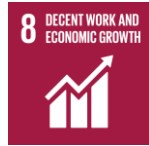
## Equality and Inclusion

- Promoting diversity and inclusion at all levels of the organization.
- Addressing gender pay gaps and ensuring equal opportunities.
- Supporting social justice initiatives and advocating for marginalized groups.



# Ethical Values

The substance



## Transparency and Accountability

- Fostering open communication and reporting on ESG performance.
- Holding leadership accountable for ethical decision-making.
- Engaging stakeholders in setting and achieving ESG goals.



## Responsible Business Practices

- Avoiding harmful business activities such as corruption and bribery.
- Building ethical supply chains and partnerships.
- Respecting intellectual property and upholding ethical marketing practices.



# Combined Impacts

The world expects from you.



## Building Trust and Reputation

- Strong ESG performance enhances brand image and consumer trust.
- Attracts and retains talent who share the company's values.
- Fosters stronger relationships with communities and stakeholders.



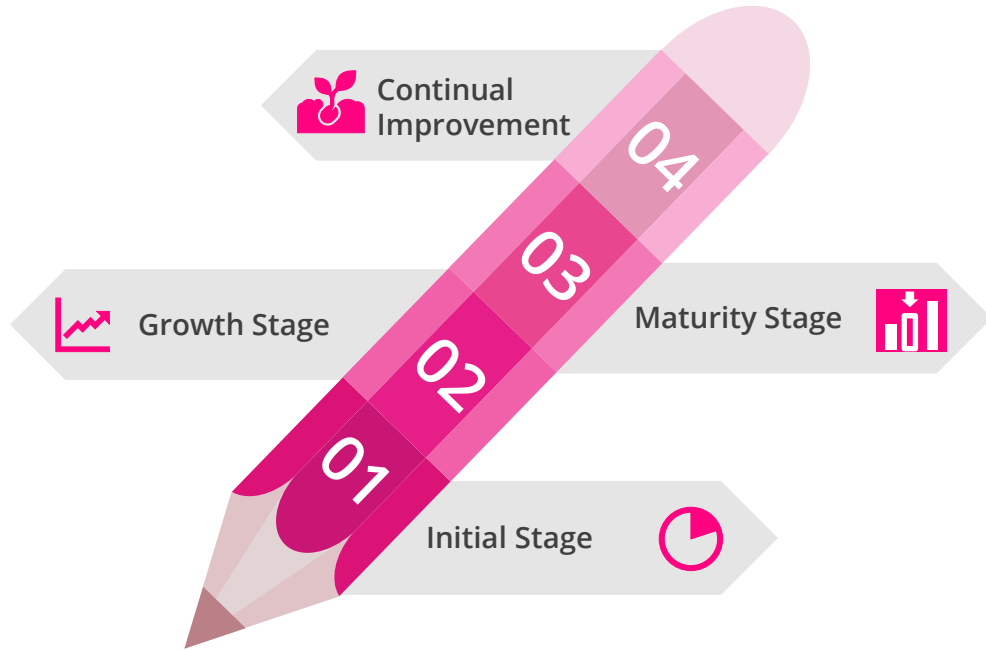
## Sustainable Future

- By addressing social and ethical issues, ESG contributes to a more just and equitable world.
- Promotes long-term business resilience and profitability.
- Contributes to achieving the UN Sustainable Development Goals.



# Sustainable Journey Stage

At what stage you are?



We can help you at

**EACH**  
Stage



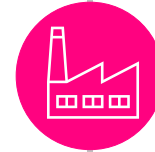
# Where we Impact?

We are Sparrow.

**Upstream**  
Sourcing, Co-Packers &  
LCA



**Your Own Sets**  
Owned/Managed  
Premises



**Downstream & Society**  
Complete Life Cycle





**Mfg. Exc. | Technology | Engineering | Sustainability**



**Caters 360+ Clients Globally**

**India's Fastest Growing Company in the Domain**

[www.sparrowrms.in](http://www.sparrowrms.in) © Sparrow Risk Management Pvt. Ltd.