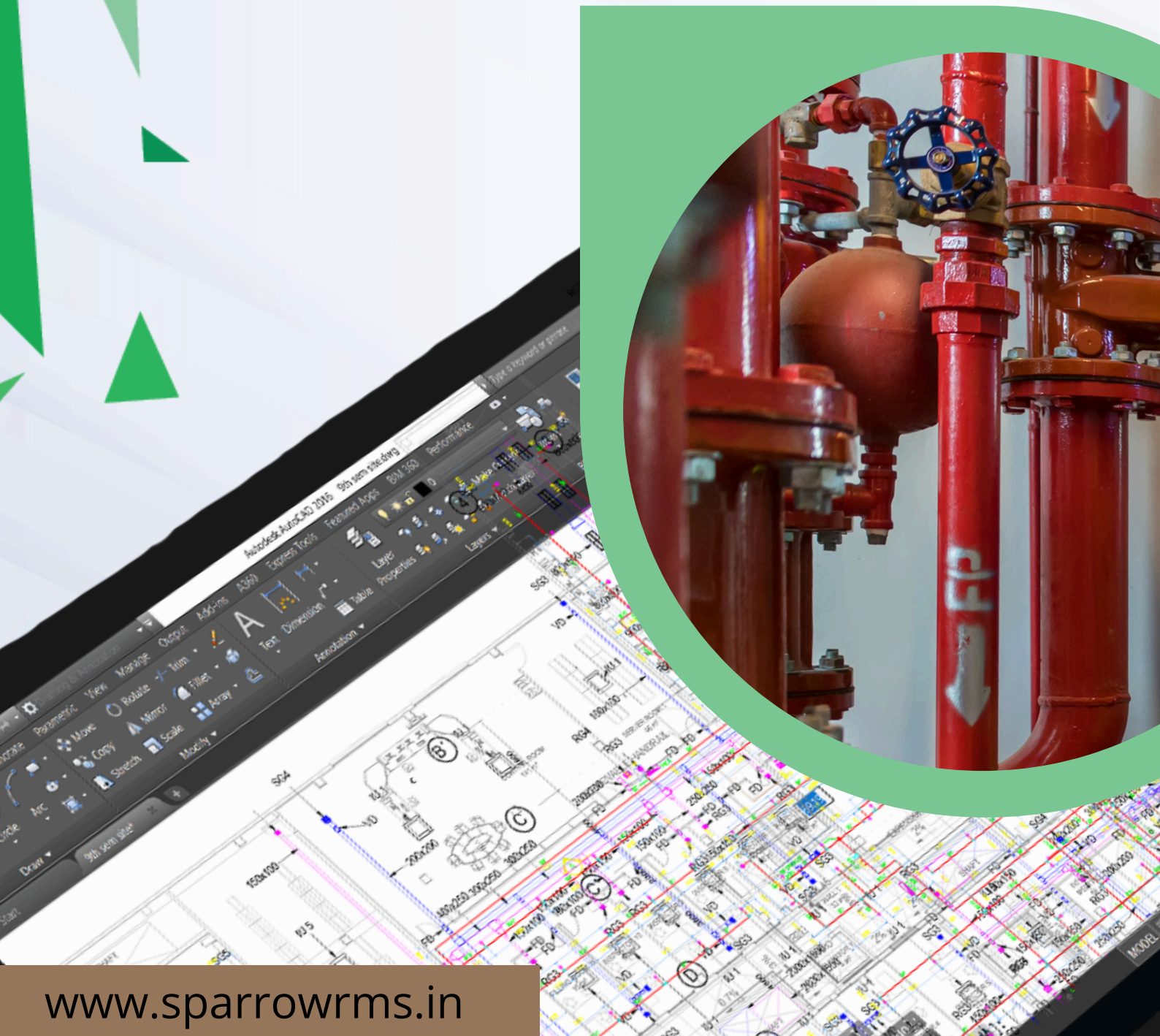




# Delivering World- Class Fire Risk Management & Engineering Solutions



# Fire Engineering Excellence



Trusted by 400+ Clients, 16 Countries

- 400+ Global Clients with 100% retention since inception.
- Custom, Code-Compliant Designs tailored to your exact needs.
- Multidisciplinary Expertise to handle complex challenges with ease.
- On-Time, Within Budget project execution.
- Tech-Driven & Sustainable Solutions for future-ready infrastructure.
- Trusted by Industry Leaders for repeated consultancy and engineering projects.
- Innovation + Precision in every project we deliver.
- One Partner, Multiple Services – Design, Risk Management, Safety & More.

For Detailed Services - [Click Here](#)

CONSULTANCY

400+

With 400+ global clients and 100% retention, Sparrow RMS is a trusted leader in design consultancy and engineering services. We deliver custom, code-compliant, and sustainable solutions using the latest technology and multidisciplinary expertise. Clients choose Sparrow for on-time, within-budget execution and unmatched reliability in every project.



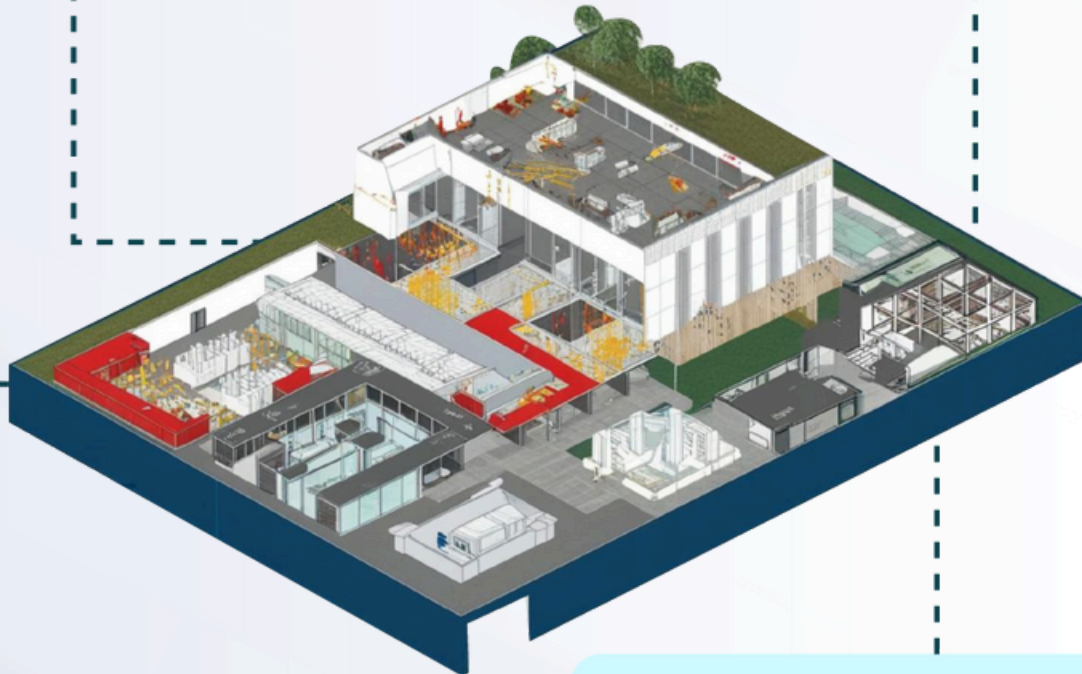


## Risk Assessment & Process Analysis:

- Conduct a thorough fire risk assessment to identify potential fire hazards and evaluate premises, occupants, and processes.
- Analyse the facilities design, architecture, and materials to understand fire spread potential.

## Compliance and Standards:

- Ensure that the design complies with local fire safety regulations (NBC-2016 & Indian Standards) and international standards, such as those from the National Fire Protection Association (NFPA) or similar authorities.



## Fire Safety Goals:

- Define clear fire safety objectives, such as protecting life, property, and continuity of operations.
- Determine the acceptable level of risk and decide on performance-based or prescriptive design approaches.
- In house ability to execute the performance-based engineering with best suitable and affordable solutions.

## System Selection & Detail Engineering:

- Detail Engineering of appropriate fire protection systems, which include pump room, hydrants sprinkler & standpipe systems, water spray systems, fire alarms, smoke detectors, and special fire suppression systems.
- Consider the type of fire hazards present (e.g., flammable and hazardous materials, electrical equipment) and select systems that are effective against identified risks.

## Integration with Premises Systems:

- Integrate with Premises systems (HVAC, BMS, power, emergency lighting) for enhanced safety.
- Coordinate with security systems for unified emergency response.

## Placement and Zoning:

- Strategically place fire protection devices, focusing on high-risk areas.
- Zone detection and suppression systems for effective activation and control.

## Redundancy and Reliability:

- Use redundant critical systems to ensure functionality during failures.
- Select reliable components to reduce maintenance and increase system lifespan.

## Maintenance and Testing Plan:

- Schedule regular maintenance and system testing.
- Train staff in routine inspections and emergency response.

## Cost-Benefit Analysis:

- Conduct a cost-benefit analysis to balance upfront and operational costs with the level of protection required.
- Consider lifecycle costs including maintenance, upgrades, and potential retrofits.

## Documentation and Training:

- Document design details, technical specs, manuals, and logs.
- Train occupants and staff on system use and emergencies.





# Impact that we are creating

In the realm of firefighting system design and engineering, we are creating a substantial impact by advancing safety, reliability, and efficiency in fire protection solutions. Our innovative approaches integrate cutting-edge technology, such as smart sensors and automated response systems, which enhance early detection and rapid suppression of fires, thereby minimizing risks to life and property.

Through meticulous design optimization and adherence to rigorous safety standards, we ensure that our engineering solutions are both robust and cost-effective. Furthermore, our emphasis on sustainability is reflected in the use of environmentally friendly materials and energy-efficient technologies. By doing so, we not only safeguard communities but also contribute to a healthier planet. Our commitment to excellence in engineering fosters trust and confidence among our clients, reinforcing our role as leaders in the evolution of fire protection strategies.



Smart Sensors  
Response



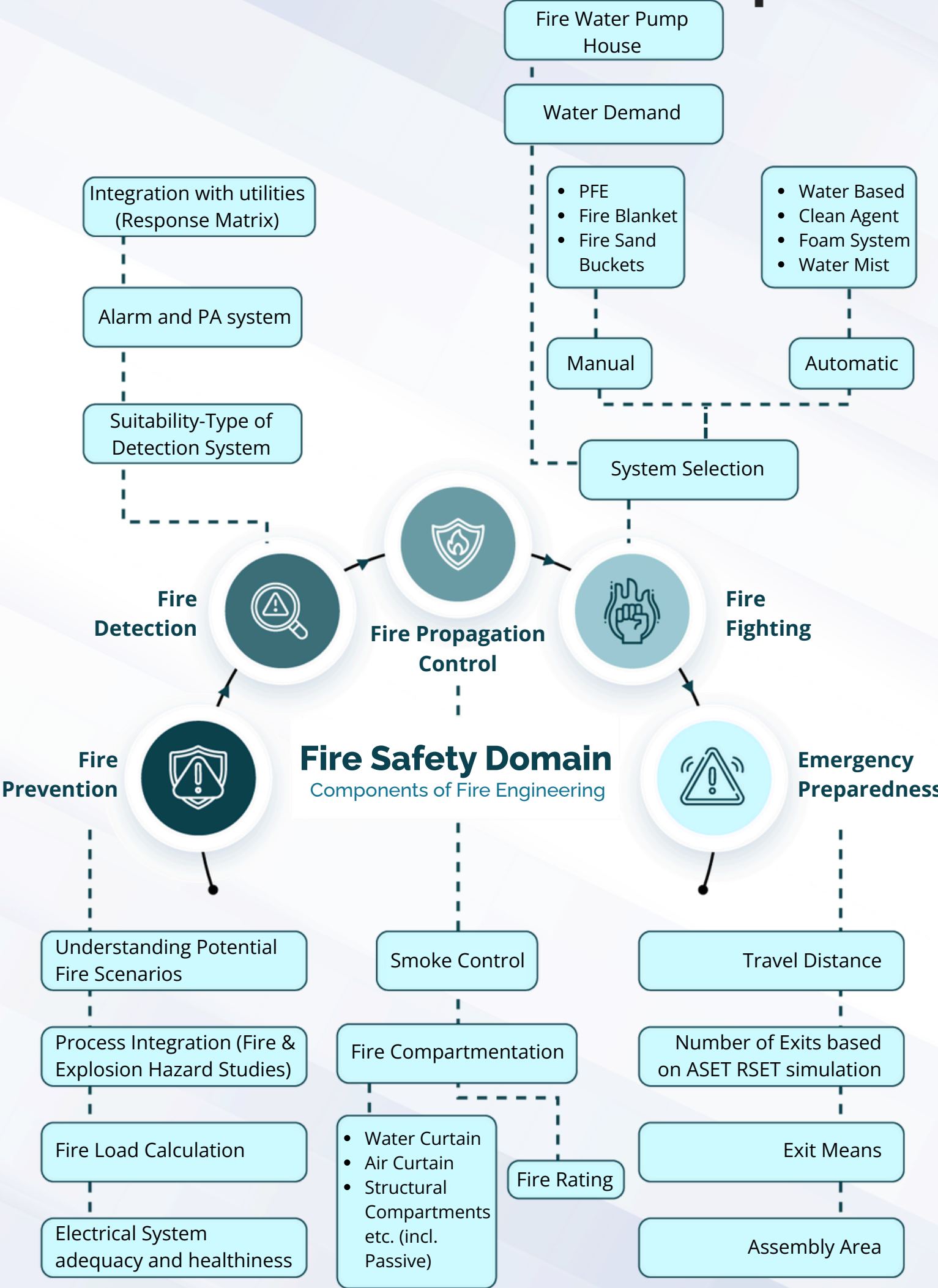
Automated  
Response



Cost - Effectives



Safety Firefighting  
Response





# Major Clients

sparrow



